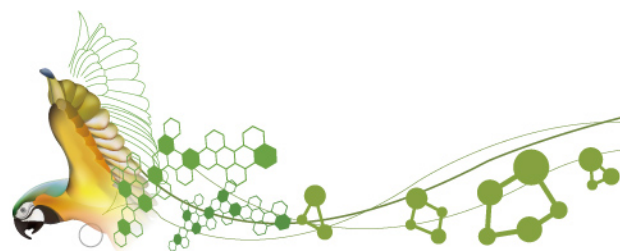


Technical Specification

| Item | Technology Parameter | |
|----------------------------|--|---|
| Generator | Item no: HK502-1, Voltage: 3 Phase,380V Inverter frequency: 40kHz | |
| | Fluoroscopy | Tube voltage: 40-110kV Tube current: 0.1-6mA |
| | Radiography | Tube voltage:40-150kV, Tube current: 10-630mA step adjustment 0.001-10s,step adjustment Nominal power: 50kW |
| X-ray tube | Item no DX3050/ 150 | Focus: 1.0/2.0mm Voltage: 150kV Capacity:190kHU |
| | Item no: RX1040/ 125 | Focus:0.6/1.6mm Voltage: 125kV Capacity:190kHU |
| Diagnostic table (DFZ-2) | Table Rotating range:-25°-0°-+90° Grid: R=10:1 f=110cm | |
| | X-ray tube Moving range:≥740mm Table horizontal moving range:≥220mm | |
| | Table size: L 2100mm×W 600mm ×H 880mm | |
| | Radiographic size | The entire film:8"×10";10"×12";11"×14" 14"×14";14"×17" Two sub-grid: 8"×10";10"×12" Three sub-grid:11"×14";14"×14"; 14"×17" Four sub-grid: 10"×12" |
| Radiographic table (DFY-1) | Tube vertical moving range:≥700mm Tube horizontal moving range: ≥1250mm | |
| | Tube rotating around horizontal support:±90°, electromagnetism brake | |
| | Tube rotating around vertical stand: ±180°, locked at each 90°. | |
| | Table vertical moving range:≥1200mm ; Table horizontal moving range: ≥200mm ; Table size: L2000mm× W740mm× H660mm | |
| Collimator (DFY-1) | Item no: SS-1, manual | |
| | Move way: continuous adjustment in the shining range | |
| Collimator (DFZ-2) | Item :S/ZS-1, manual and automatic in one | |
| | Move way: continuous adjustment in the shining range | |
| Image system | Image Intensifier (Toshiba) Input vision:9" High resolution: 48Lp/cm | |
| | Monitor : 14" , CRT Camera, Pixel: 400,000 | |
| | Center Comprehensive resolution≥1.2Lp/mm | |
| Vertical chest stand | Radiography table at vertical position, the lowest distance from the camera obscure to the ground: ≤ 80cm | |
| | Vertical height: 210 cm Vertical moving range: ≥100 cm | |
| | Film size: 8"×10",10"×12",11"×14",14"×14", 12"×15", 14"× 17" | |
| | Grid | size: 388mm×464mm (14"×17")N=40L/cm; R=10:1; f=180cm |

DF-625H-1
Diagnostic
X-ray System





Diagnostic X-ray System



HI! *hello!*

Hi! I am a new member of ORICH family, DF-625H-1. Do you look familiar with me when you see me first time? Don't look down on me because my heart is of high-frequency type. Power 50KW, what strong energy it is!

ORICH Family

There are many members in my family.
DF series X-ray diagnostic system;
FS series digital radiography system;
OX series mobile system;
And there are several X-ray system for vehicle-mounted.



What can I do for you?

Fluoroscopy and spot film is a piece of cake.

0.5-5mA fluoroscopy current

40-110kV fluoroscopy voltage

(The same mA and kV value greatly reduces the radiation to the patients by my high-frequency characteristic, which makes your working image, no matter film type or screen type, much more perfect.)



There are 'six pieces' of ABC curves in my mind, which ensures that I will show you a picture with the same brightness no matter from chest to abdomen or from abdomen to chest.



I am very clever and I know a lot of things. I will alert you if you make fluoroscopy for your patients more than 5 minutes.



I am able to monitor kV & mA realtimely and adjust them in time to ensure each of your exposure process under control.





Diagnostic X-ray System

Those are only part of my functions and I can show greater power in radiography.

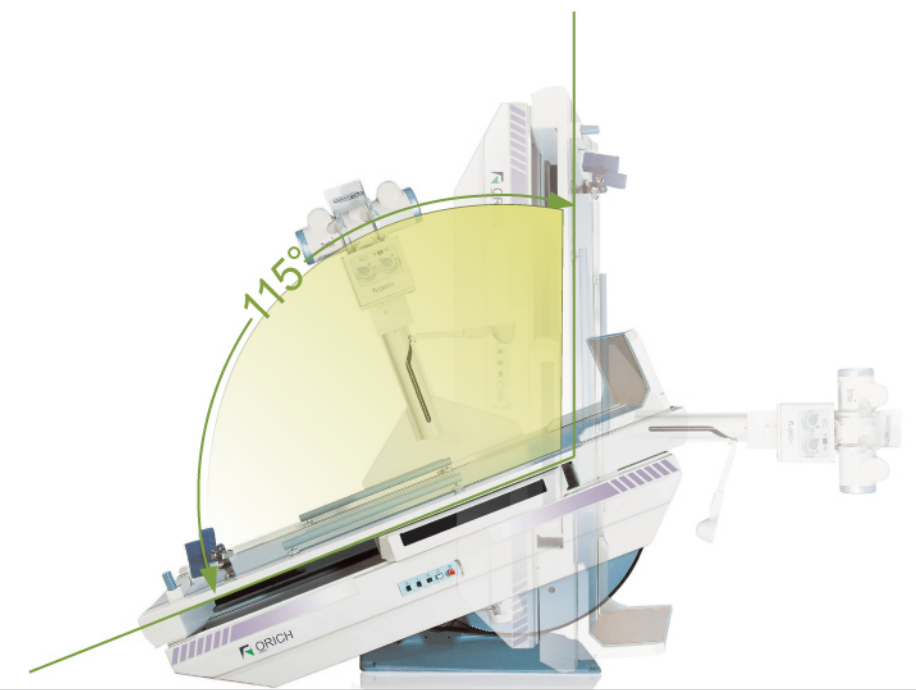
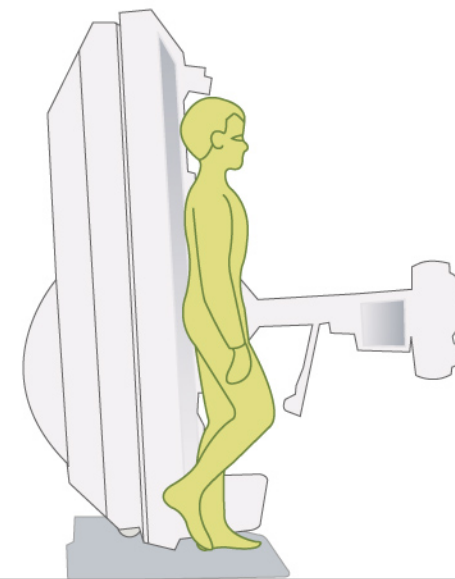
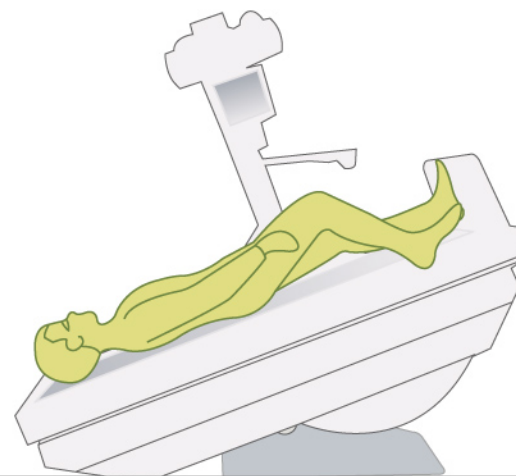
With 150kV radiography, lateral position of pelvis and lumbar can be completed easily. My 50kW energy is the basis and guarantee for high kV, short-time radiography such as silicosis film.

With hundreds of APR you can finish radiography every time easily as if you are reading a menu.

I can also provide AEC function for your adoption; if you select me, you can finish your daily work with pleasant mood.

Radiographic Table

My trunk is made of high-intensity alloy-aluminum and one-step molding, light and high precision. My body is digital-control molded and welded integrally. I can move in different directions and glide stably and precisely. With my coordinative partner, vertical chest stand, I can complete all radiography jobs. You can also connect me with CR and DR, by which I will change to a digital image system.





Diagnostic X-ray System

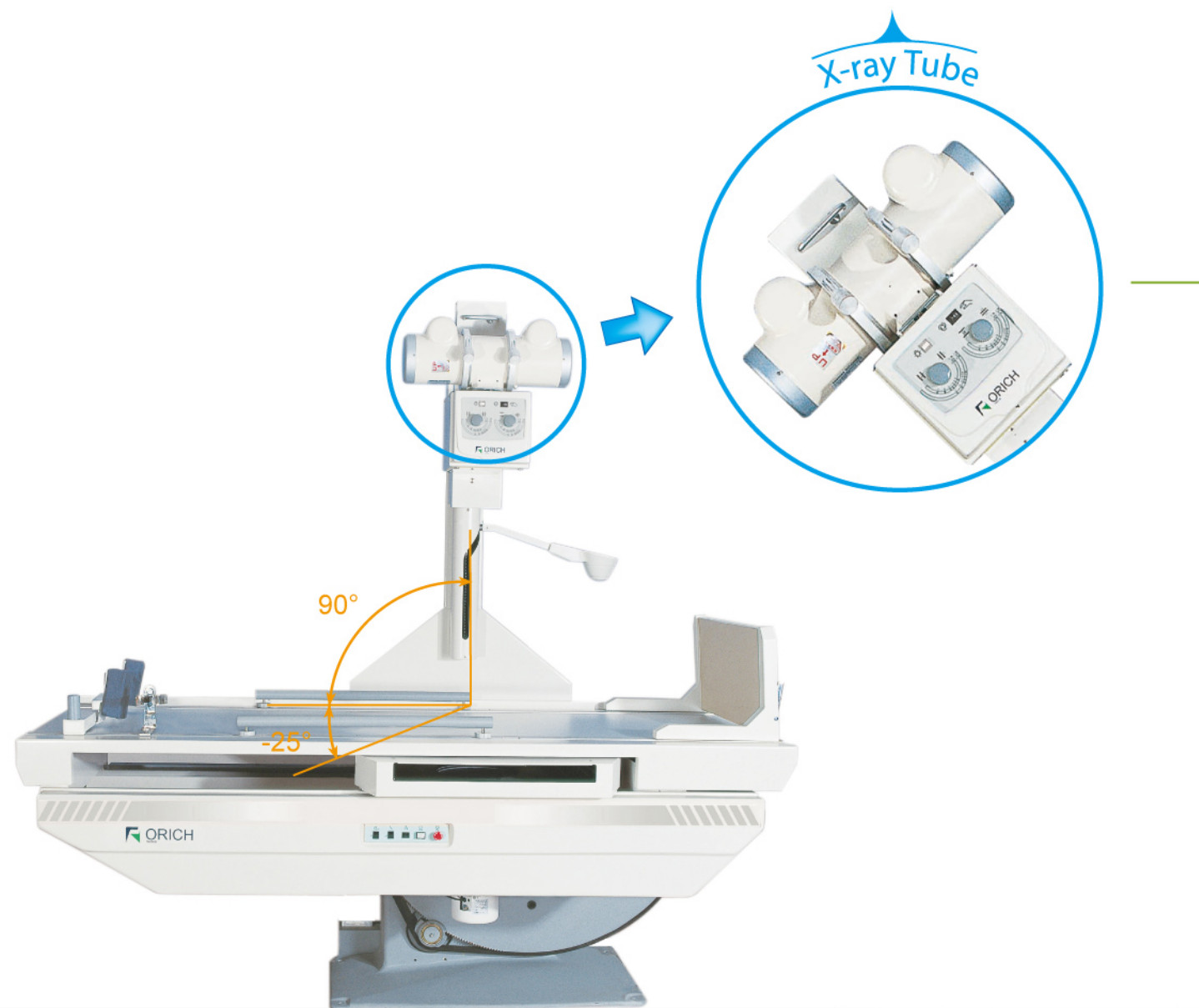


Image output is my strong point.

Look, with 9" high quality image intensifier and dedicate camera that is exquisitely designed for you, no disease can escape from my eyes. I also provide you with eight amplitude memory, movable noise reduction, image turn-over, positive and negative image as well as terminal freezing. And the image working station is optional.

- Compact island design of the diagnostic table perfectly realizes diversified diagnoses of stomach and intestine, etc. for adults and children, and can satisfy the special requirements of the Interventional therapy
- 740mm moving distance of the X-ray Tube, adequately satisfies different clinical diagnoses for digestive tract and abdomen radiography.
- High-quality X-ray tube with high kV and small focus.
- Humanity design fully improves the patients' sense of security and comfort
- 25°reverse-tilting function is convenient to control contrast medium.

Please operate me with no worry and I will feel tired. I am competent and have no compliant about many health care examination and radiography. If I am beyond my energy load one day, I will turn on the red light. If I am sick some day, please do not worry about me, because I can diagnose myself and will tell you what my problem is, then I can be easily repaired and continue serving you.

