

DP-2200

Digital Ultrasonic Diagnostic Imaging System

Technical Specifications:

General Descriptions

Imaging mode:	B, B+B, B+M, M
Gray scale:	256
Display:	10" non-interlaced
Transducer frequency:	2.5 – 10MHz
Transducer connector:	1 (standard), 2 (optional)
Dynamic imaging technology:	Digital Beam-forming (DBF) Dynamic Receiving Focusing (DRF) Up to 16 zone transmitting focusing Dynamic Frequency Scan (DFS) Real-time Dynamic Aperture (RDA) Dynamic Receiving Apodization (DRA)

Scanning angle:	from 67 to 120 degree (depending on transducers)
Scanning depth (mm):	from 21.6 to 248 (depending on transducers)

Imaging Processing

Pre-processing:	dynamic range edge enhancement frame correlation 4-segment TGC adjustment IP (Image Process) acoustic power adjustment high resolution/high frame rate select
Post-processing:	gray map left-right reverse up-down reverse

Functions:

Cine loop:	128-frame cine loop memory
Storage media:	internal flash and USB
Zoom:	panoramic in real-time and frozen condition
Built-in image archive:	permanent storage up to 90 images

Measurement & Calculation

B-mode:	distance, circumference, area, volume, angle, ratio, histogram, profile, 5%
M-mode:	distance, time, velocity, heart rate (2 cycles)
Software packages:	abdomen, gynecology, obstetrics, orthopedics

Others

Peripheral port:	video output 1 USB port 1 VGA output port 1 DICOM3.0 1(optional)
------------------	---

Power supply:	100-240VAC±10%, 50Hz/60Hz
Dimensions:	360mm (W) X 320mm (L) X 270mm (H)
Net weight:	9.5Kg

Standard Configurations

DP-2200 main unit
10" non-interlaced monitor
One transducer connector
128-frame CINE loop
90-frame image storage
One USB port
Measurement & calculation software package
Electronic convex array transducer: 35C50EB (2.5/3.5/5.0MHz)

Options

Electronic linear array transducer: 75L38EB (5.0/7.5/10MHz)
Electronic linear array transducer: 75L60EA (5.0/7.5/10MHz)
Electronic endocavity transducer: 65EC10EB (5.0/6.5/8.0MHz)
Electronic micro-convex array transducer: 35C20EA (2.5/3.5/6.0MHz)
Electronic micro-convex array transducer: 65C15EA (5.0/6.5/8.0MHz)
Two transducer connectors
Needle-guided brackets
DICOM3.0
Footswitch
Mobile trolley
Hand carried bag



MINDRAY



NEW

DP-2200

Digital Ultrasonic Diagnostic Imaging System



MINDRAY™

socimed

VENTE DE CONSOMMABLES ET D'APPAREILS MÉDICAUX
Tel. +331 49 98 86 72 - socimed@socimed.com





DP-2200

Digital Ultrasonic Diagnostic Imaging System

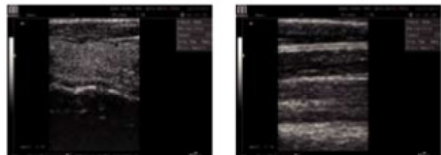
Complete image solutions and economic price make Mindray's DP-2200 meet challenges in today's ultrasound market. With its full digital technology and high quality transducers, DP-2200 provides the elegant image quality as an ideal portable working station. It will meet your daily diagnostic needs without any compromise.

Full digital technology and wide applications



Fetal head

IVC



Thyroid

Median nerve

- Mindray's full digital technology yields high-quality image, which will bring you more assurance for your daily diagnoses
- A suite of complete clinical solutions comes with a wide range of transducers for obstetrics, gynecology, abdomen, urology, small parts, orthopedics and pediatrics

Versatile file management solutions

- Powerful file management solutions make DP-2200 unique
- Images and cine files can be transferred to PC via USB port. Optional DICOM allows users to benefit from network image management that increase efficiency
- Permanent storage up to 90 images, 128-frame cine loop memory and internal flash memory for easy image reviewing

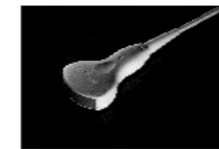


Confidence of measurement power

- A full range of powerful user-define image preset, exam modes and measurement and calculation packages coupled with abundant measurement items (e.g. volume, stenosis, heart rate)
- Different population oriented OB measurement formulae for more accurate results (e.g. Tokyo, Hadlock, Nelson). The fetal growth indexes include eighteen items (e.g. EFW, AFI, BPD)



35C20EA Micro-convex
Application: Pediatric, Cardiac



35C50EB Convex
Application: Abdomen, GYN, OB, Urology



65EC10EB Endocavity
Application: Endovaginal, Endorectal



75L38EB Linear
Application: Small Parts



75L60EA Linear
Application: Orthopedics, Breast, Musculoskeletal



65C15EA Micro-convex
Application: Pediatrics